

**San Gabriel County Water District
Regular Meeting of the Board of Directors
8366 Grand Ave.
Rosemead, CA 91770**

September 13, 2016

4:00 P.M.

AGENDA

Call to Order

1. Pledge of Allegiance

- 2. Roll Call**
- | | |
|--------------------|-------|
| Director Taylor | _____ |
| Director Chan | _____ |
| Director Cammarano | _____ |
| Director Cici | _____ |
| Director DeLaTorre | _____ |

3. Additions, Re-order and Adoption of the Agenda:

Motion:
Second:
Action:

4. Public Comment on Agenda and Non-Agenda items

Anyone wishing to discuss items on and not on the agenda may do so at this time

5. Minutes of a regular meeting of the Board of Directors held August 23, 2016

Motion:
Second:
Action:

6. List of Demands on General Account

a. August 2016 Invoices

Motion:
Second:
Action:

7. District Counsel

Regular Meeting of the Board of Directors

September 13, 2016

Page -2-

8. Action Item

Motion:

Second:

Action:

9. Miscellaneous Information Items

a. Receive and File the August 2016 Banking and Investment Report

b. Water Well Report

c. Annual Fall Conference in San Diego, Ca. October 24-27, 2016

10. General Manager Report

11. Future Agenda Items

12. Director Comments

13. Adjournment

Motion:

Second:

Action:

Materials related to an item on this agenda submitted after distribution of the agenda packet are available for public review at the District office, located at 8366 Grand Ave., Rosemead, CA 91770.

If you have special needs because of a disability which make it difficult for you to access or participate in the meeting, please contact the District Finance & Administration Manager, (626) 287-0341, by at least noon on the Monday preceding the meeting. The District will attempt to make arrangements to accommodate your attendance.

**MINUTES OF A REGULAR MEETING OF
THE BOARD OF DIRECTORS OF
SAN GABRIEL COUNTY WATER DISTRICT
HELD ON AUGUST 23, 2016**

CALL TO ORDER	A regular meeting of the Board of Directors of the San Gabriel County Water District was held on Tuesday, August 23, 2016, at 8366 Grand Avenue, Rosemead, California at the hour of 4:00 p.m.
ROLL CALL	President Taylor; Directors Cammarano, Chan, Cici, DeLaTorre, General Manager Prior; Assistant General Manager Feilen; Finance and Administration Manager Corona; and District Counsel Keith Lemieux were present.
AGENDA	Upon motion by Director Cammarano, and seconded by Director Chan, the Board voted 5-0 to adopt the agenda for this regular meeting of the Board of Directors held on August 23, 2016.
MINUTES	Upon motion by Director Cammarano, and seconded by Director Chan, the Board voted unanimously to approve the minutes of the regular meeting of the board of directors held on August 9, 2016.
DEMANDS	Upon motion by Director Chan, and seconded by Director Cici, the Board voted 5-0 to approve the payment of check number 18332 in the aggregate amount of \$45,012.16.
EXPENSES	None.
PUBLIC COMMENT	None.
DISTRICT COUNSEL	None.
ACTION	Upon motion by Director Chan, and seconded by Director DeLaTorre, the Board voted 5-0 to approve Resolution No. 08-16-490 that amends the personnel manual increasing the vesting plan to 12 years for medical benefits.
INFORMATION	The July 2016 Monthly Revenue and Expenditure Report was received and filed.
GENERAL MANAGER COMMENTS	None.
FUTURE AGENDA ITEMS	None.

**DIRECTOR
COMMENTS**

None.

ADJOURNMENT

Upon motion by Director DeLaTorre, and seconded by Director Cici, the Board voted 5-0 to adjourn the meeting.

President

Secretary

[SEAL]

San Gabriel County Water District
AP Check Register (Current by Bank)

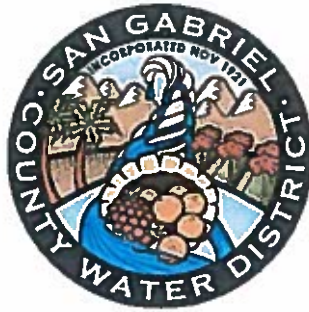
Check Dates: 8/1/2016 to 8/31/2016

Check No.	Date	Status	Vendor ID	Payee Name	Amount
BANK ID: 13200 - REVOLVING ACCOUNT					13200
10849	08/04/16	P	13777	APPLEONE EMPLOYMENT SVCS	\$185.45
10850	08/04/16	P	13728	G2K CONSTRUCTION, INC.	\$1,099.15
10851	08/04/16	P	13538	HIGHROAD INFORMATION TECHNOLOG	\$1,125.00
10852	08/04/16	P	13505	MEGAN PRIOR-PFEIFER	\$300.00
10853	08/04/16	P	12674	U.S. BANK	\$1,516.09
10856	08/10/16	P	10243	A.W.W.A. - CA-NV SECTION	\$100.00
10857	08/10/16	P	13604	ALICE R.F. SHEN, D.D.S., M.S.	\$170.00
10858	08/10/16	P	13694	CALIFORNIA AMERICAN WATER	\$89.72
10859	08/10/16	P	13443	CLIFFORD D. LANGLOIS, D.D.S.	\$131.00
10860	08/10/16	P	10072	EMPLOYMENT DEVELOPMENT DEPT. -	\$1,944.92
10861	08/10/16	P	11940	LINCOLN NATIONAL LIFE INS. CO.	\$1,870.00
10862	08/10/16	P	13547	LOUISE DIRIAN	\$120.00
10863	08/10/16	P	10017	PUBLIC EMPLOYEES RETIREMENT SY	\$9,364.48
10864	08/10/16	P	13375	ROBIN SU, D.D.S.	\$65.00
10865	08/10/16	P	13494	ROY H. CHANG, D.D.S.	\$459.00
10866	08/10/16	P	13285	STATE WATER RESOURCES	\$55.00
10867	08/10/16	P	13729	TRI CITY ENDODONTICS	\$129.00
10868	08/12/16	P	13163	CARLOS CARDONA	\$2,000.00
10869	08/16/16	P	13300	BRIAN W. SNAER, D.D.S.	\$297.00
10870	08/16/16	P	11926	DIVE / CORR, INC.	\$100.00
10871	08/16/16	P	12192	FEDERAL EXPRESS	\$36.63
10872	08/16/16	P	13731	INLAND EMPIRE ORAL SURGEONS	\$1,156.00
10875	08/24/16	P	10076	BLUE SHIELD OF CALIFORNIA	\$2,859.00
10876	08/24/16	P	10072	EMPLOYMENT DEVELOPMENT DEPT. -	\$1,944.89
10877	08/24/16	P	11940	LINCOLN NATIONAL LIFE INS. CO.	\$1,870.00
10878	08/24/16	P	10017	PUBLIC EMPLOYEES RETIREMENT SY	\$9,376.30
10879	08/24/16	P	13206	STEPHEN W. BOWEN, D.M.D.	\$229.00
10880	08/24/16	P	13458	VANESSA HO, D.D.S.	\$99.00
10881	08/31/16	P	13742	CAU TO TRINH	\$396.82
10882	08/31/16	P	13738	JOY TRAN	\$45.28
10883	08/31/16	P	13736	LANDWIN DMV LLC	\$10,025.36
10884	08/31/16	P	13739	LOUIS ORIGEL	\$45.28
10885	08/31/16	P	13547	LOUISE DIRIAN	\$35.00
10886	08/31/16	P	13737	MAITE C. RAMOS-RAMIREZ	\$751.26
10887	08/31/16	P	13376	MARTINEZ & ZERMENO 11 APDC	\$200.00
10888	08/31/16	P	13701	MARY ANN EBBA, D.M.D.	\$115.00
10889	08/31/16	P	13740	NEWBY VANTAGE LLC	\$506.34
10890	08/31/16	P	13733	OLSON URBAN-SAN GABRIEL 1, LLC	\$1,429.40
10891	08/31/16	P	13333	RESERVE ACCOUNT	\$300.00
10892	08/31/16	P	13735	SWISH DEVELOPMENT, LLC	\$6,873.62
10893	08/31/16	P	13734	UDOMSUP INKAVESVANITCH	\$43.80
10894	08/31/16	P	13741	WENDY HO	\$495.01
BANK 13200 REGISTER TOTAL:					\$59,953.80
GRAND TOTAL :					\$59,953.80

* Check Status Types: "P" - Printed ; "M" - Manual ; "V" - Void (Void Date) ; "A" - Application; "E" - EFT
** Denotes broken check sequence.

San Gabriel County Water District
Invoice Register (By Invoice Number)

Invoice Number / Line Description	Vendor Name / Expense Account	Invoice Date	Posting Date	Terms Code	Purchase Order / Job	Amount
082416PR.&.BOARD	12031	REVOLVING REIMBURSEMENT 13200 - CITIZENS BANK - REVOLVING AC	08/24/16	08/24/16		\$44,913.84
INVOICE 082416PR.&.BOARD TOTAL:						\$44,913.84
REPORT TOTAL:						\$44,913.84



SAN GABRIEL COUNTY WATER DISTRICT
Bank Account August 31, 2016

State of California Local Agency Investment Fund
Transactions through Citizens Bank, Sacramento, CA

Amount of Investment	\$5,160,161.15
LAIF Interest Rate	.60%
Citizens Bank - General Account	\$2,240,606.62

I hereby certify that the foregoing is true and correct and in accord with the District's Investment Policy.

Date: 09/13/16


Treasurer

<u>August 2015</u>	<u>YTD August 2015</u>	<u>August 2016</u>	<u>YTD August 2016</u>
<u>Cash Receipts</u>			
\$630,165.40	\$5,257,234.59	\$910,294.51	\$5,472,024.06
<u>Disbursements</u>			
\$526,667.66	\$5,328,549.06	\$403,761.78	\$5,801,371.15
<u>Water Sales</u>			
\$480,578.37	\$3,422,791.97	\$698,189.11	\$4,572,642.34



Water Levels as of August 31, 2016

Listed below are the water levels in the Baldwin Park Key Well and Wells owned and operated by San Gabriel County Water District.

The Baldwin Park Key Well is located in the central portion of the San Gabriel Valley within the City of Baldwin Park and is used by the Main San Gabriel Basin Watermaster to monitor changes in the groundwater supply for the Basin. Each vertical foot is equivalent to about 8,000 acre-feet of groundwater in the Main Basin. The Key Well elevation is measured at sea level.

	<u>August 2015</u>	<u>August 2016</u>
Baldwin Park Key Well	175	172.6

Reservoir Storage in the San Gabriel Canyon:

Cogswell Reservoir	11,136 acre-feet
San Gabriel Reservoir	43,646 acre-feet
Morris Reservoir	<u>28,696 acre-feet</u>
Total Storage Capacity	83,478 acre-feet

As of August 29, 2016 combined storage was 13,537 acre-feet (16 percent of capacity)

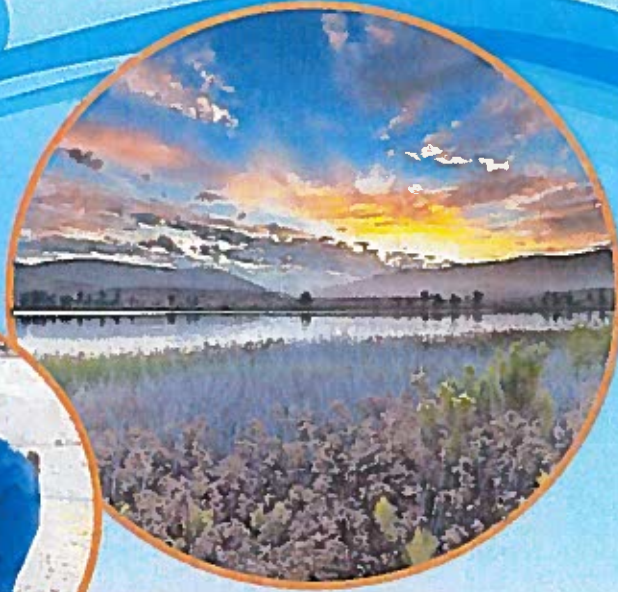
San Gabriel County Water District

Listed below are water levels measured at static and pumping and also pump depth.

	<u>2015</u>	<u>2015</u>	<u>2016</u>	<u>2016</u>	
	STATIC	PUMPING	STATIC	PUMPING	PUMP DEPTH
<u>Raymond Basin</u>					
Well #3	262	295	Destroyed	N/A	N/A
<u>Main San Gabriel Basin</u>					
Well #9	304.5	424.5	NM	427.5	462
Well #11	219	offline	224	offline	460
Well #12	231.5	253.5	234.5	254.5	360
Well #14	207.5	282	207.5	284	360
Well #15	391	426	393	434	660

What's on the Water Horizon?

**PRELIMINARY
TECHNICAL
PROGRAM**



2016

ANNUAL FALL CONFERENCE

OCTOBER 24-27, 2016

SAN DIEGO TOWN & COUNTRY HOTEL

